

### PLA SILK

Printing with great detail, smooth and glossy finish. The SILK effect reflects light allowing the manufacture of objects with a soft and silky result, which will make your pieces stand out thanks to some hypnotic reflections.



#### PROPERTIES

Available colours:



Blue Steel, Old Copper, Kings Gold, Mercury Silver, Ruby Pink, Ruby Red, Irish Green and Snow White

Available diameter:  
1.75mm

Size of the spool:  
300 g and 1kg

#### GENERAL PRINT SETTINGS:

Nozzle Temperature:  
Between 200° - 230°C

Bed Temperature:  
Between 50° and 70°C

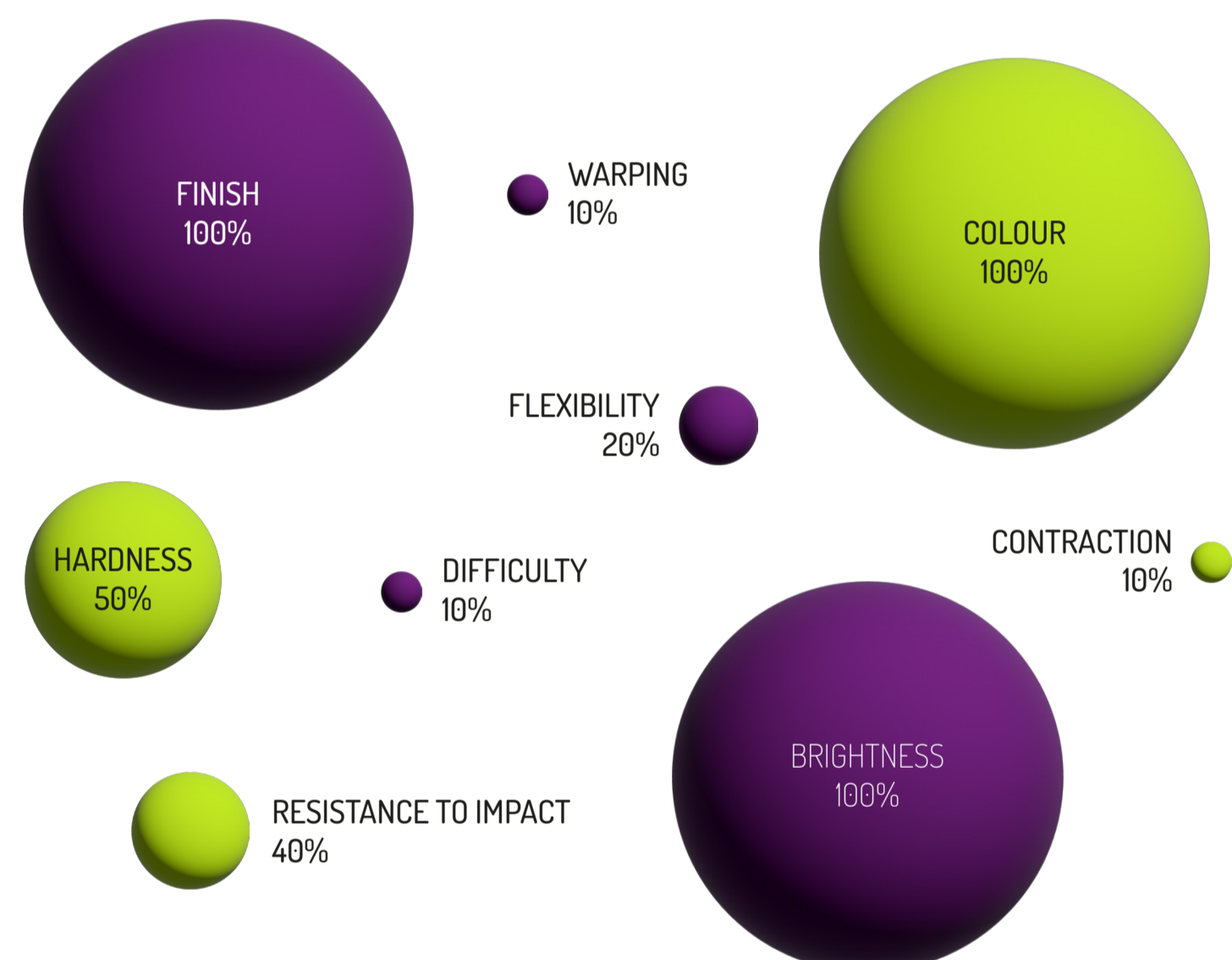
Printing Speed:  
40-80 mm/s

  
EXCELLENT ADHESION TO  
BEDDING BETWEEN COATS

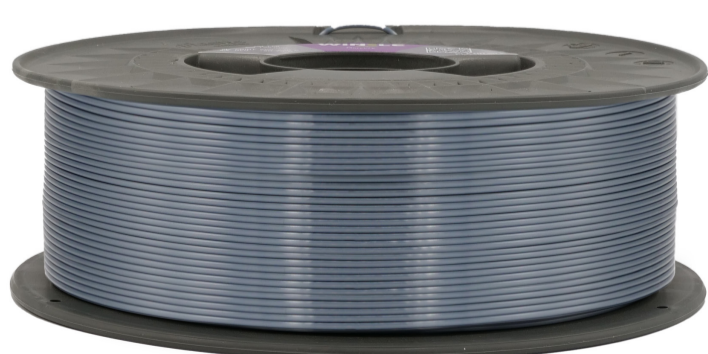
  
PRINT IN A  
VENTILATED PLACE

  
EASY TO  
PRINT

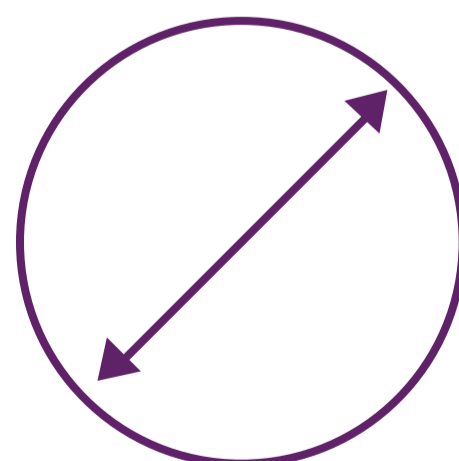
  
BIODEGRADABLE



#### QUALITY WARRANTY OF WINKLE'S PLA SILK FILAMENT



Better spooling



Constant diameter

Ø 1,75 mm  
± 0,05 mm



Reusable bag, spool and silica bag

\*The indicated parameters are valid for correctly calibrated printers (P&D, mechanical and fuser)

\*Supervised and tested manufacturing process (diameter, colour and winding) to guarantee the quality of our product

\*Compatible with most FDM 3D printers on the market